



# NEXT GENERATION EQUIPMENT

FOR ATHLETES WHO WANT TO DOMINATE THEIR OPPONENT.

FOR PLAYERS WHO GO BEYOND THEIR LIMITS AND GIVE EVERYTHING.

FACE NEW CHALLENGES.



# RECREATIONAL 2022

## JOOLA – TABLE TENNIS TRADITION AND EXPERIENCE SINCE 1952

With more than 70 years of table tennis know-how and experience sponsoring three Summer Games and countless World and European Championships, JOOLA continues to rise above industry standards to lead the way for the sport. We bring together table tennis clubs and athletes to create an inclusive ecosphere of encouragement, inspiration, and player development by making easier for athletes of all levels to achieve peak performance with our innovative equipment.

The wealth of knowledge and expertise that JOOLA has accumulated over the past seven decades sets the foundation for our products. JOOLA creates a wide variety of table tennis rackets, apparel, tables, and accessories for players, both professional and recreational. We utilize the latest technological advancements to help players push their limits and achieve new milestones on their table tennis journey. Choose JOOLA and get ready to level up.





# CONTENTS

<b>RACKETS</b>	<b>04</b>	<b>RACKETS-SETS</b>	<b>18</b>
<b>BALLS</b>	<b>28</b>	<b>CASES</b>	<b>38</b>
<b>NETS</b>	<b>58</b>	<b>TABLES</b>	<b>44</b>
		<b>ROBOTS</b>	<b>66</b>
<b>ACCESSORIES</b>	<b>76</b>		

UNSTOPPABLE

BE UNSTOPPABLE

▲ WHEN YOU'VE BATTLED FOR EVERY POINT. WHEN YOU'VE MADE EVERY SHOT COUNT. BE READY FOR THE NEXT LEVEL. BE UNSTOPPABLE. WE UTILIZE THE LATEST TECHNOLOGICAL ADVANCEMENTS TO HELP PLAYERS PUSH THEIR LIMITS AND ACHIEVE NEW MILESTONES ON THEIR TABLE TENNIS JOURNEY. CHOOSE JOOLA AND GET READY TO LEVEL UP.

JOOLA

UNSTOPPABLE



RACKET

01

RACKETS

# RACKETS

---

A SUITABLE, QUALITY RACKET FEELS LIKE AN EXTENSION OF YOUR ARM AND ADDS CONSISTENCY TO YOUR GAME. AN EVEN BALL BOUNCE AND HIGH SPIN VALUES INCREASE YOUR CHANCE OF VICTORY.

# RACKET TECHNOLOGIES

The know-how accumulated over several decades on the table tennis world stage is the foundation used today in the development of our table tennis rackets. We use innovative technologies and specially selected materials to offer equipment with the best playing feel and performance.

## ERGO GRIP — TECHNOLOGY —

### ERGO GRIP

Specially designed and contoured ergonomic racket grips designed for maximum comfort and stable grip.

## CENTRO BALANCE TECHNOLOGY

### CENTRO BALANCE

Optimized weight distribution to the center of the racket for a comfortable feel.

## PRO FRICTION TECHNOLOGY

### PRO FRICTION

Revised, more grippy topsheet for increased ball rotation and acceleration values.

## EXTRA CONTROL TECHNOLOGY

### EXTRA CONTROL

Rubbers that have been specially developed to produce a high level of ball control and feel. Increases consistency, accuracy and error tolerance in all stroke techniques.

## CATAPULT CELL TECH

### CATAPULT CELL

Uses a porous cell structure in the sponge to maximize the absorption of the incoming rotation/speed and to increase the catapult response. Ideal for a dramatically increasing spin production!

## SPEED DRIVE TECHNOLOGY

### SPEED DRIVE

An optimized formula for the production of a balanced sponge density that provides the basis for a dynamic ball contact for exceptional attacking strokes.

## CARBON POWDER TECHNOLOGY

### CARBON POWDER

The glue interspersed with carbon powder gives your racket the extra kick you need for your offensive game. Perfect for those, who need a little extra acceleration without losing the balance of control.

## CARBON SPEED TECHNOLOGY

### CARBON SPEED

Take your game to the professional level with the fast and powerful boost of carbon fiber layers that are built into the racquets. This provides a significant increase in attacking performance and outstanding precision.

The image features a large, stylized white 'X' that serves as a central graphic element. The word 'CARBON' is positioned to the left of the 'X', and 'PRO' is to the right. The entire composition is set against a dark, textured background that resembles a carbon fiber weave. A light gray grid is overlaid on the background, with small dots at the intersections. The 'X' is composed of two thick, white, curved strokes that meet in the center.

# CARBON X PRO





# CARBON X PRO

## TAKE YOUR GAME TO THE NEXT LEVEL!

The carbon weave integrated into the blade of the CARBON X PRO ensures unparalleled dynamics and a consistently high performance across the entire blade. The performance of the ITTF-approved Micron rubbers with a sponge thickness of 2.0 mm is at the absolute top level and guarantees shots with maximum spin and speed. Take your game to the next level with the JOOLA CARBON X PRO.

Rubber: MICRON  
Sponge: 2.0 mm

Veneers: 5+2

ART.-NO. 54206

RRP 79,90 €





## MEGA CARBON

★★★★★★

Use the ultimate power of the carbon and revitalise your attacking game! The JOOLA MEGA CARBON also has a very pleasant feel with the help of Catapult Cell Technology. A table tennis bat at premium level!

Rubber: UPP Veneers: 5+2  
Sponge: 2.0 mm

ART.-NO. 54205

RRP 69,90 €

**114**  
SPEED

**116**  
SPIN

**112**  
CONTROL



## CARBON CONTROL

★★★★★

The CARBON CONTROL racket from JOOLA utilizes carbon fiber weave for ground breaking control and feeling. This works hand-in-hand with our Catapult Cell Technology to absorb incoming speed and spin, resulting in masterful control.

Rubber: FIESTA Veneers: 5  
Sponge: 2.0 mm

ART.-NO. 54190

RRP 29,90 €

**92**  
SPEED

**93**  
SPIN

**112**  
CONTROL



## CARBON PRO

★★★★★

The JOOLA CARBON PRO with 2.0mm ITTF approved 4You rubbers is the classic among table tennis bats. The mix of the power of the carbon and the dynamic feeling rubbers is the basis for this racket being an excellent choice for every offensively oriented player!

Rubber: 4YOU Veneers: 5+2  
Sponge: 2.0 mm

ART.-NO. 54195

RRP 49,90 €

**102**  
SPEED

**106**  
SPIN

**108**  
CONTROL



# CARBON SPEED

## PLAY WITHOUT SPEED LIMIT!

The fast JOOLA CARBON SPEED gives your attacking strokes power and penetrating force. The proven ITTF-approved Vizion rubbers also enable enormous spin values with which you will drive your opponents to defeat. 3 balls and a matching racket cover complete your equipment!

Rubber: VIZON Veneers: 5  
Sponge: 2.0 mm

ART.-NO. 54193

RRP 44,90 €







**JÖRG ROSSKOPF**

WORLD & EUROPEAN CHAMPION,  
GERMAN NATIONAL COACH



**PRO FRICTION  
TECHNOLOGY**

**CENTRO  
BALANCE  
TECHNOLOGY**

**SPEED DRIVE  
TECHNOLOGY**



# ROSSKOPF CLASSIC

## PLAY LIKE THE CHAMPION!

A table tennis bat at the absolute top level! The grippy Micron rubbers produce the highest rotation values and are very dynamic. The pleasant feel also helps you keep control over your strokes. The offensive JOOLA ROSSKOPF CLASSIC offers you everything it takes to dominate your opponent!

Rubber: MICRON

Veneers: 5

Sponge: 2.0 mm

ART.-NO. 54200

RRP 54,90 €





## ROSSKOPF SMASH

★★★★★

The perfect control for your game! The ITTF approved JOOLA Vizon rubbers have a high momentum to set offensive accents with lots of rotation. This racket gives you the feeling of having everything under control. It helps you enormously to avoid mistakes and to place your shots with pinpoint accuracy.

Rubber: VIZON      Veneers: 5  
Sponge: 1.8 mm

ART.-NO. 53135

RRP 29,90 €



## ROSSKOPF ATTACK

★★★★

Liven up your offensive game! The fast Vizon rubber gives you plenty of options for your offensive strokes with maximum spin. Sophisticated serves and topspins are superb with this racket and are easy to control. Attack with brains with the JOOLA ROSSKOPF ATTACK!

Rubber: VIZON      Veneers: 5  
Sponge: 1.8 mm

ART.-NO. 52133

RRP 22,90 €



## ROSSI JR PRO

★★★★★

Featuring a shorter handle and racket head, this racket utilizes JOOLA's Ergo Grip technology to provide a lightweight and comfortable racket for youth players, while balancing spin and control with our Pro Friction Vizon rubber.

Rubber: VIZON      Veneers: 5  
Sponge: 1.7 mm

ART.-NO. 53140

RRP 24,90 €







## MATCH PRO

★★★★★

JOOLA's MATCH PRO offers players a racket geared for spin production. Combining the ITTF approved Vizon rubber's Pro Friction Technology, with an Ergo Grip handle design, this racket is both comfortable and effective when it comes to creating ball rotation and acceleration. Step your match up, with the MATCH PRO.

Rubber: VIZON Veneers: 5  
Sponge: 2.0 mm

ART.-NO. 53022

RRP 22,90 €

90  
SPEED

93  
SPIN

94  
CONTROL



## MATCH

★★★

The JOOLA MATCH racket is a great all-round racket for those developing early techniques in table tennis. The MATCH is designed specifically to focus on control and consistency, with enough speed and spin to learn strokes.

Rubber: VIZON Veneers: 5  
Sponge: 1.8 mm

ART.-NO. 53020

RRP 14,90 €

82  
SPEED

84  
SPIN

96  
CONTROL



## MATCH LITE

★★★★★

Refine your basic skills with the MATCH LITE! The light weight of the JOOLA MATCH LITE provides an exceptionally comfortable feel. This racket is a classic all-rounder and offers you an excellent mix of speed, spin and control!

Rubber: TRAMP Veneers: 5  
Sponge: 1.8 mm

ART.-NO. 53023

RRP 24,90 €

86  
SPEED

90  
SPIN

91  
CONTROL



# TEAM PREMIUM

## TOP CLASS ALL-ROUND RACKET!

Perfectly balanced with the help of Centro Balance Technology, the JOOLA TEAM PREMIUM offers you pure playing pleasure! The spin performance, coupled with excellent control values, is outstanding with this racket. Give your game the JOOLA TEAM PREMIUM boost!

Rubber: VIZON                      Veneers: 5  
Sponge: 2.0 mm

ART.-NO. 52002

RRP 24,90 €





## TEAM MASTER

★★★

The JOOLA TEAM MASTER with the ITTF approved JOOLA Vizon rubbers offers you everything you need for your variable table tennis game. It is very easy to control the ball and when you want to attack, the racket has the power you want.

Rubber: VIZON Veneers: 5  
Sponge: 1.9 mm

ART.-NO. 52001

RRP 19,90 €



## TEAM SCHOOL

★★

The JOOLA TEAM SCHOOL table tennis bat is ideal for beginners and for use in school sports. The concave handle of the table tennis bat and the 1.2 mm pimples inside table tennis coverings provide good playing characteristics for learning the basics.

Rubber: ICON Veneers: 5  
Sponge: 1.2 mm

ART.-NO. 52000

RRP 12,90 €



## TEAM JUNIOR

★★★

The perfect racket to introduce children to table tennis! With its smaller and thinner handle designed specifically for children, this racket combines exceptional balance with superb control - ideal for learning and developing beginner skills.

Rubber: VIZON Veneers: 5  
Sponge: 2.0 mm

ART.-NO. 52004

RRP 16,90 €





# PETRIŠA SOLJA

---

2 TIMES EUROPEAN CHAMPION



**BE FEARLESS**

RACKET SET



# RACKET SETS

---

PLAY WITH A PARTNER. SHARE YOUR LOVE FOR THE SPORT.  
BRING THE GAME WITH YOU.

RACKET SETS





# SET DUO CARBON

**FOR A TOP DUEL ON  
EYE LEVEL!**

With 2 high-quality Joola Carbon Speed rackets with carbon technology and 3 Joola Tournament\*\*\* balls, nothing stands in the way of a duel under the best conditions. Everything can be easily stored and transported in the enclosed racket case.

Rubber:	VIZON	Rackets:	2
Sponge:	2.0 mm	Balls:	3

ART.-NO. 54822

RRP 69,90 €



# SET DUO PRO

## THE PROFESSIONAL TABLE TENNIS SET!

The JOOLA table tennis set DUO PRO, consists of 2 JOOLA Match Pro table tennis bats, three JOOLA Tournament\*\*\* table tennis balls and a practical cover to store everything. It's perfect for players who always have their equipment ready to compete with their opponents.

Rubber:	VIZON	Rackets:	2
Sponge:	2.0 mm	Balls:	3

ART.-NO. 54821

RRP 42,90 €



## SET DUO

The DUO table tennis set includes 2 Joola Match rackets with 2.0 mm ITTF-approved Joola Vizon rubbers and 3 Joola Advanced Training\*\*\* balls in a practical storage bag. Nothing stands in the way of an exciting match!

Rubber:	VIZON	Rackets:	2
Sponge:	1.8 mm	Balls:	3

ART.-NO. 54820

RRP 29,90 €



## SET ROSSKOPF

The Joola racket set ROSSKOPF consists of 2 rackets and 3 Joola Advanced Training\*\*\* balls. Excellent as a beginner model or for the hobby area.

Rubber:	ICON	Rackets:	2
Sponge:	1.7 mm	Balls:	3

ART.-NO. 54805

RRP 16,90 €





## SET FAMILY

With the JOOLA FAMILY table tennis set, nothing stands in the way of a family match for four. The table tennis set FAMILY consists of 4 JOOLA SPIRIT table tennis rackets and 5 table tennis balls in white and orange. In the practical and handy bag all rackets and balls find their place for storage.

Rubber:	ICON	Rackets:	4
Sponge:	1.2 mm	Balls:	10

ART.-NO. 54810

RRP 28,90 €



## SET FAMILY ADVANCED

The complete set for the whole family! 4 high-quality rackets with enormously grippy rubbers and 8 balls provide maximum fun.

Rubber:	VIZON	Rackets:	4
Sponge:	1.7 mm	Balls:	8

ART.-NO. 54824

RRP 49,90 €



# SET TEAM SCHOOL

## FOR SCHOOL SPORTS AND PLAYGROUND!

The JOOLA TEAM SCHOOL table tennis bat is ideal for beginners and for use in school sports. The concave handle of the table tennis bat and the 1.2mm pimples in rubber provide good playing characteristics for learning the basics.

Rubber:	ICON	Rackets:	4
Sponge:	1.2 mm	Balls:	8

ART.-NO. 54825

RRP 32,90 €



# SET QUATTRO

## SET OF 4 IN A STYLISH DESIGN!

The JOOLA QUATTRO racket set offers you 4 high-quality rackets in a simple design, 5 yellow and 5 white table tennis balls. The entire equipment can be optimally stored and transported in the fashionable black bag.

Rubber:	ICON	Rackets:	4
Sponge:	1.7 mm	Balls:	10

ART.-NO. 54818

RRP 29,90 €



# SET BLACK+WHITE

## ELEGANT AND TIMELESS DESIGN.

With the JOOLA BLACK+WHITE set, you'll look your best everywhere - whether at school, at the stone table or in the club!

The stylish JOOLA BLACK+WHITE set consists of 2 high-quality table tennis bats with a white and black surface colour, as well as 8 balls with black JOOLA logo print.

Rubber:	ICON	Rackets:	2
Sponge:	2.0 mm	Balls:	8

ART.-NO. 54817

RRP 39,90 €



 JOOLA



# SET COLORATO

## BRING COLOR INTO YOUR GAME!

With the JOOLA table tennis set COLORATO it becomes colorful! The set COLORATO consists of 2 high-quality JOOLA Colorato table tennis bats with different surface colors on the front and back, as well as 8 colorful Colorato table tennis balls. The trendy bats with concave handle offer excellent playing characteristics and provide lots of fun at the table.

Rubber:	ICON	Rackets:	2
Sponge:	2.0 mm	Balls:	8

ART.-NO. 54814

RRP 39,90 €



## SET VIVID OUTDOOR

2 sturdy and weatherproof outdoor rackets in a modern design! The rubberized surface is perfect for playing with the enclosed extra heavy outdoor balls. With the racket cover Pocket Double everything can be transported comfortably.

Rackets: 2

Balls: 3

ART.-NO. 51010

RRP 34,90 €



## SET MULTICOLOR BAT

The set Multicolor consists of four weatherproof, easy to play rackets in different colors. Ideally suited for the birthday, swimming pool visit or barbecue.

Rackets: 4

ART.-NO. 54830

RRP 14,90 €



## BALLS

---

CONSISTENT ROUNDNESS, BOUNCE, AND DURABILITY MAKE UP THE IDEAL TABLE TENNIS BALL. WHETHER YOU'RE PLAYING FOR FUN, TRAINING, OR COMPETING, WE'VE GOT YOU COVERED.



# ADVANCED TRAINING

## THE ENTRY INTO PROFESSIONAL TRAINING!

The JOOLA ADVANCED TRAINING\*\*\* table tennis ball is optimal for players and clubs who also rely on the best quality in training. The table tennis ball with seam made of ABS impresses with its identical wall thickness as well as uniform hardness, which leads to a significantly improved durability.

Quantity: 12      Ball type: Plastic ABS with seam  
Color: white | orange      Weight: 7 g

ART.-NO. 44205  
ART.-NO. 44255

WHITE  
ORANGE

RRP 5,90 €  
RRP 5,90 €



## ADVANCED TRAINING\*\*\* 12+3

Quantity: 15      Ball type: Plastic ABS with seam  
Color: white | orange      Weight: 7 g

ART.-NO. 44206      WHITE/ORANGE      RRP 6,90 €



## ADVANCED TRAINING\*\*\* 24

Quantity: 24      Ball type: Plastic ABS with seam  
Color: white      Weight: 7 g

ART.-NO. 44207      WHITE      RRP 11,90 €





# TOURNAMENT

## TRAININGS BALLS AT COMPETITION LEVEL!

The JOOLA TOURNAMENT competition ball goes through several control and testing procedures and thus has improved roundness and uniformity. This guarantees optimal competition conditions.

Quantity: 12

Ball type: Plastic ABS with seam

Color: white

Weight: 7 g

ART.-NO. 44322

WHITE

RRP 8,90 €



## TRAINING 40+ 120

The box of 120 JOOLA TRAINING 40+ balls offers an excellent price/performance ratio of ABS plastic balls with stitching. The high quality training balls convince with their roundness and durability.

Quantity: 120      Ball type: Plastic ABS with seam  
Color: white | orange      Weight: 7 g

ART.-NO. 44230	WHITE	RRP 39,90 €
ART.-NO. 44280	ORANGE	RRP 39,90 €



## TRAINING 40+ 144

The ball bucket contains 144 JOOLA TRAINING 40+ table tennis training balls.

Quantity: 144      Ball type: Plastic ABS with seam  
Color: white | orange      Weight: 7 g

ART.-NO. 44235	WHITE	RRP 49,90 €
ART.-NO. 44285	ORANGE	RRP 49,90 €

# PLAY LIKE THE CHAMPION



## ROSSI\*\*\* 40+

Quantity: 6      Ball type: Plastic ABS with seam  
Color: white | orange      Weight: 7 g

ART.-NO. 44320      WHITE      RRP 4,90 €  
ART.-NO. 44360      ORANGE      RRP 4,90 €

## ROSSI\* 40+

Quantity: 6      Ball type: Plastic ABS with seam  
Color: white | orange      Weight: 7 g

ART.-NO. 44310      WHITE      RRP 3,90 €  
ART.-NO. 44350      ORANGE      RRP 3,90 €

## ROSSI CHAMP\*\*\* 40+

Quantity: 6      Ball type: Plastic ABS with seam  
Color: white | orange      Weight: 7 g

ART.-NO. 44300      WHITE      RRP 3,50 €  
ART.-NO. 44301      ORANGE      RRP 3,50 €





# OUTDOOR BALLS

The table tennis ball JOOLA OUTDOOR 40+ is ideal for outdoor table tennis games. Due to the optimized for outdoor play characteristics, with a 20% higher total weight, great rallies can be achieved even in windy conditions.

Quantity: 6, 12  
Color: white

Ball type: Plastic ABS with seam  
Weight: 7 g

ART.-NO. 42181  
ART.-NO. 42183

6  
12

RRP 6,90 €  
RRP 11,90 €





## BALLSET SPINBALL

The JOOLA SPINBALL is a high-quality training and leisure table tennis ball in a two-tone ball design with a white and an orange ball half. The JOOLA SPINBALL is also suitable as an ideal training aid in beginner training due to „visible“ rotation.

Quantity:	12	Ball type:	Plastic ABS with seam
Color:	multicolor	Weight:	7 g

ART.-NO. 42185	MULTICOLOR	RRP 7,90 €
----------------	------------	------------



## BALLSET SPORTS

The JOOLA ball set SPORTS offers balls with designs from other sports. Play table tennis with the mini version of a soccer ball, a basketball, a baseball or a billiard ball!

Quantity:	12	Ball type:	Plastic ABS with seam
Color:	multicolor	Weight:	7 g

ART.-NO. 42177	MULTICOLOR	RRP 7,90 €
----------------	------------	------------



# BALLSET COLORATO

## BRING COLOR INTO YOUR GAME!

With the JOOLA ball set COLORATO, consisting of 6 one-color and 6 two-color table tennis balls, playing table tennis becomes more colorful! Whether in the schoolyard or in the garden duel, with the trendy JOOLA COLORATO balls you are always ahead. The two-colored ball variant also helps you to recognize the rotation of the ball earlier and thus improves your performance at the table.

Quantity:	12	Ball type:	Plastic ABS with seam
Color:	multicolor	Weight:	7 g

---

ART.-NO. 42150	MULTICOLOR	RRP 7,90 €
----------------	------------	------------

BE CONFIDENT  
BE CONFIDENT  
BE CONFIDENT  
BE CONFIDENT  
BE CONFIDENT



## CASES

---

A HIGH-QUALITY, MODERN RACKET CASE WILL NOT ONLY PROTECT YOUR RACKET, BUT ALSO LETS YOU SET STYLISH ACCENTS.





# ALU LASER BATCASE

Racket case with real aluminium front and lasered JOOLA logo. The interior is covered with foam. For one racket and three balls.

Color:	black	Weight:	0,7 kg
Material:	Aluminium	Dimensions:	30 x 5 x 22 cm

ART.-NO. 80544

RRP 35,90 €



## ALU BATCASE

Racket case in aluminum design with foam inlay for 1 racket and 3 balls.

Color: black, blue, silver Weight: 0,7 kg  
Material: Aluminium Dimensions: 30 x 5 x 22 cm

ART.-NO. 80540	BLACK	RRP 32,90 €
ART.-NO. 80541	SILBER	RRP 32,90 €
ART.-NO. 80542	BLUE	RRP 32,90 €



## ALU DOUBLE BATCASE

Racket case in aluminum design with foam inlay for 2 rackets and 3 balls.

Color: black Weight: 0,7 kg  
Material: Aluminium Dimensions: 30 x 5 x 22 cm

ART.-NO. 80555	BLACK	RRP 35,90 €
----------------	-------	-------------



## POCKET DOUBLE

Nylon case with space for 2 rackets and with ball compartment for 3 balls.

Color: black Weight: 0,1 kg  
Material: Nylon Dimensions: 27 x 2,5 x 19 cm

ART.-NO. 80505 RRP 7,50 €



## POCKET

Nylon case with space for 1 rackets and with ball compartment for 3 balls.

Color: green, blue, red Weight: 0,1 kg  
Material: Nylon Dimensions: 33 x 2,5 x 19 cm

ART.-NO. 80500	BLACK-GREEN	RRP 6,90 €
ART.-NO. 80501	BLACK-BLUE	RRP 6,90 €
ART.-NO. 80502	BLACK-RED	RRP 6,90 €



## BALL CASE

Triangular robust protection case for the safe storage of three table tennis balls.

Color: black, red Weight: 0,05 kg  
Material: Nylon Dimensions: 11 x 5 x 9 cm

ART.-NO. 42210	BLACK	RRP 5,90 €
ART.-NO. 42211	RED	RRP 5,90 €



# JÖRG ROSSKOPF

---

WORLD & EUROPEAN CHAMPION,  
GERMAN NATIONAL COACH





**IT NEVER  
GETS EASIER,  
YOU JUST  
GET BETTER.**

TABLES

05

TABLES

## TABLES

---

AS THE OFFICIAL TABLE SPONSOR FOR COUNTLESS INTERNATIONAL TOURNAMENTS, JOOLA OFFERS A RANGE OF HIGH-QUALITY TABLE TENNIS TABLES FOR ALL SPACES AND OCCASIONS.



# INSIDE J18

The bestseller JOOLA INSIDE J18 is the ideal table tennis table for all hobby players and is also ideal for club and school sports due to the anthracite, 18 mm thick table surface. The two separate, foldable halves feature a double anti-tilt mechanism and height-adjustable feet. The table comes 95% pre-assembled, so it can be set up in just 15 minutes. A matching net is included.



18 mm



96 kg



58 x 161 cm

ART.-NO. 11246

RRP 559,00 €

# INSIDE J15

The stylish JOOLA INSIDE J15 table tennis table with its excellent workmanship and 15 mm thick table surface is the optimal choice to enjoy your table tennis hobby. The two separate, foldable halves feature a double anti-tilt mechanism and height-adjustable feet. The table has lockable casters and is very easy to assemble. A matching net is included.



16 mm



83 kg



63 x 161 cm

ART.-NO. 11241

RRP 459,00 €



# INSIDE 18

The JOOLA INSIDE 18 is the ideal table tennis table for all hobby players and is also ideal for club and school sports due to the blue, 18mm thick table surface. The two separate, foldable halves feature a double anti-tilt mechanism and height-adjustable feet. The table comes 95% pre-assembled, so it can be set up in just 15 minutes. A matching net is included.



18 mm



82 kg



58 x 161 CM

ART.-NO. 11127

RRP 539,00 €





# TRANSPORT

The JOOLA TRANSPORT table convinces with its transport system, where each plate half can be moved on 4 rollers. The assembly and disassembly is also particularly easy and possible without effort. With several tables only a small storage space is needed. The plate thickness is 19 mm and a metal profile frame is provided. The sturdy, powder-coated metal base offers double anti-tilt protection, making the table ideal for hobby players, as well as clubs and school sports. A net set is not included in the delivery.



19 mm



82 kg



68 x 167 cm



ART.-NO. 11271

BLUE

RRP 489,00 €

ART.-NO. 11270

GREEN

RRP 489,00 €



# WORLD CUP 22

The JOOLA WORLD CUP table in professional look with a metal profile frame height of 50 mm and a plate thickness of 22 mm. Practical transport system, where each half of the plate is mobile on 4 casters and requires little storage space. The sturdy, powder-coated metal base in the color gray aluminum offers a double anti-tilt. Ideal for clubs with large youth work. A net set is not included in the delivery.



22 mm



94 kg



62 x 166 cm



ART.-NO. 11281

BLUE

RRP 599,00 €

ART.-NO. 11280

GREEN

RRP 599,00 €



# OUTDOOR J500A

The weatherproof, 6mm thick table surface made of aluminum composite material impresses with an enormously even ball bounce. The transport system with 8 large lockable casters on 15 cm wide rollers per tabletop half, ensures excellent mobility at all times. The two separate, individually height-adjustable table halves are foldable and quickly assembled. A matching net is included.



6 mm



80 kg



60 x 157 cm

ART.-NO. 11645

RRP 629,00 €



# OUTDOOR J200A

The height-adjustable JOOLA OUTDOOR J200A with its 6 mm thick table surface is the optimal table tennis table for outdoor use. The transport system with 8 lockable casters on approx. 7 cm casters allows the complete construction to be moved easily and flexibly. The table tennis table can be easily assembled in only 15 minutes. A matching net is included in the delivery.



6 mm



73 kg



56 x 157 cm



ART.-NO. 11642

RRP 579,00 €





# OUTDOOR RALLY TL

The JOOLA OUTDOOR RALLY TL is a high quality table tennis table specially designed for year-round outdoor use and for all weather conditions and terrains. The playing characteristics of the table surface made of 6 mm thick aluminum composite board meet the very highest requirements for outdoor table tennis tables. The table legs are height adjustable. A matching net is included in the delivery.



6 mm



73 kg



68 x 167 cm

ART.-NO. 11134

RRP 529,00 €





# ALUTERNA

The weatherproof JOOLA ALUTERNA table has a 6 mm thick aluminum/plastic composite playing surface and stands out with its attractive and eye-catching design. The solid, powder-coated metal base with height-adjustable feet and lockable casters leaves nothing to be desired. Separate, foldable halves allow solo play with one half of the table and compact storage. A matching net is included in the delivery.



6 mm



67,5 kg



65 x 160 cm

ART.-NO. 11650

RRP 629,00 €





## TABLE COVER OUTDOOR

The JOOLA Dual Function Waterproof Table Cover is made to protect your outdoor table tennis table from all harsh weather conditions, as well as scratches and dust. The cover is fit with a unique, easy-to-use securing system involving hook-and-loop fastener, buckles and straps to ensure 100% protection. Cover your ping-pong table in both playing and storage position using the hook-and-loop fastener to attach the cover and straps to secure to the undercarriage.

ART.-NO. 19901

RRP 44,90 €







## TABLE COVER

Water resistant cover for table tennis tables. The sheet can only be used for tables when they are clapped together. Easy and quick assembly due to cords that can be fastened on the edges.

ART.-NO. 19900

RRP 29,50 €



## SERVICE PRACTICE NET

Space-saving storage and convenient use are the key features of the new JOOLA safety net. The practical folding mechanism, the good workmanship, the intelligent rolling system and the easy handling make the catch net an indispensable helper, especially for serve and multi ball training.

ART.-NO. 21145

RRP 129,00 €

# MIDSIZE

A medium-sized table tennis table for small rooms and confined spaces. The attractive design complements any home or office decor perfectly and offers those involved enormous fun in between games. Due to the high-quality workmanship, the table makes a very valuable impression. A matching net is included in the delivery.



6 mm



16,8 kg



92 x 20 cm

ART.-NO. 19117

RRP 179,90 €





## MIDSIZE

The medium-sized table tennis table JOOLA MIDSIZE is ideal for small spaces. Due to the space-saving size and easy handling, the medium-sized table tennis table can be stored practically. With the accompanying net set and the simple and quick assembly, the table tennis table is ready for use in a few minutes and fun is guaranteed. The colors blue and green are available.



6 mm



16,8 kg



92 x 20 cm

ART.-NO. 19110  
ART.-NO. 19115

BLUE  
GREEN

RRP 179,90 €  
RRP 179,90 €



## MINI

The small table, weighing only 7 kg, can be easily set up anywhere and transforms any place into a competition venue. Show your sensitivity and keep your nerves during the exciting rallies with your opponent. The net is included. The colors blue and green are available.



5 mm



5,5kg



50 x 5 cm

ART.-NO. 19100  
ART.-NO. 19104

BLUE  
GREEN

RRP 79,90 €  
RRP 79,90 €





# NETS

---

EXPECT EASY ATTACHMENT SOLUTIONS AND PROFESSIONAL PLAYING  
CONDITIONS WITH JOOLA'S HIGH-QUALITY NETS.

# PRO TOUR

The ITTF-approved JOOLA PRO TOUR net is a sturdy competition set made of cotton iron yarn with integrated micro height adjustment screw.

Weatherproof:	no	Weight:	1,5 kg
Material:	Aluminium	Mounting:	Screw technology

ART.-NO. 31036

RRP 41,90 €



 JOOLA

NETS | 59



# CONNECT

## CONNECTS FRIENDS, FAMILY AND WORK COLLEAGUES!

The JOOLA CONNECT net can be pulled apart to the desired length and can thus be used on any table. Games at home on the dining table or in the office on the desk. JOOLA CONNECT connects everywhere.

Weatherproof:	no	Weight:	0,79 kg
Material:	Plastik	Mounting:	Clamp technology

ART.-NO. 30001

RRP 21,90 €







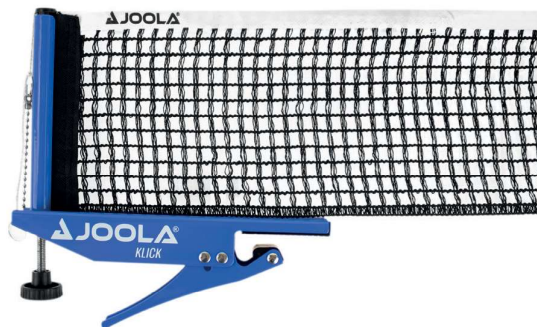
## AVANTI

The JOOLA AVANTI net is a sturdy metal set with a smooth-running locking screw and a handy height adjustment screw. Perfect for recreational sports!

Weatherproof: no      Weight: 0,85 kg  
Material: Aluminium      Mounting: Screw technology

ART.-NO. 31009

RRP 24,90 €



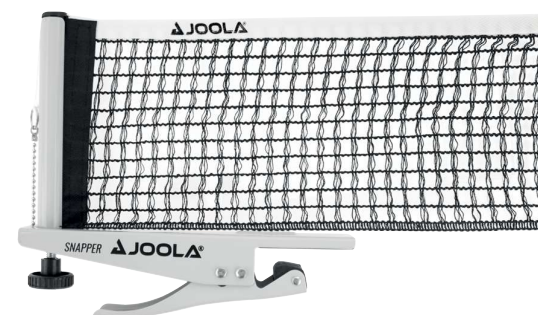
## KLICK

The solid JOOLA KLICK metal set with height adjustment and practical clamping technology stands out with its striking blue color.

Weatherproof: no      Weight: 0,8 kg  
Material: Aluminium      Mounting: Clamp technology

ART.-NO. 31011

RRP 28,90 €



## SNAPPER

The compact JOOLA SNAPPER metal set with height adjuster and integrated clamping technology convinces in a simple light gray design.

Weatherproof: no      Weight: 0,9 kg  
Material: Aluminium      Mounting: Clamp technology

ART.-NO. 31013

RRP 24,90 €





## CLUB

The solid JOOLA CLUB metal net post set in bright red color is ideal for recreational use.

Weatherproof: no      Weight: 0,5 kg  
 Marterial: Aluminium      Mounting: Screw technology

ART.-NO. 31006

RRP 15,90 €



## EASY

The particularly inexpensive JOOLA EASY metal set scores with easy handling and adjustable mains tension.

Weatherproof: no      Weight: 0,5 kg  
 Marterial: Aluminium      Mounting: Clamp technology

ART.-NO. 31008

RRP 18,90 €

STOP



## LIBRE

The weatherproof JOOLA LIBRE plastic set is a top model with height adjuster, practical clamping technology and adjustable net tension.

Weatherproof:	no	Weight:	0,85 kg
Material:	Plastik	Mounting:	Clamp technology

ART.-NO. 31016

RRP 32,90 €



## OUTDOOR

The JOOLA OUTDOOR net is an inexpensive metal set with easy handling and adjustable net tension.

Weatherproof:	no	Weight:	0,8 kg
Material:	Aluminium	Mounting:	Screw technology

ART.-NO. 31015

RRP 19,90 €

# ALUMINIUM WX

## DESIGNED FOR ANY WEATHER!

The weatherproof JOOLA ALUMINIUM WX premium table tennis net is made of particularly robust, weatherproof anodized aluminum and is therefore suitable for use on indoor as well as outdoor table tennis tables. By means of a micro height adjustment screw with integrated net rod lock, you can optimally adjust the net set to your table tennis table.

Weatherproof:	yes	Weight:	1 kg
Material:	Aluminium	Mounting:	Screw technology

ART.-NO. 11191

RRP 59,90 €





ROBOTS

07

ROBOTS

# ROBOTS

---

ROBOTS ENABLE THE TRAINING WITHOUT A PARTNER AND GUARANTEE  
ERROR-FREE, ACCURATE PLACEMENT. PLAY WHEN YOU WANT AND HOW  
YOU WANT. MEET YOUR NEW TRAINING PARTNER.

# ROBOT SHORTY

The multifunctional table robot SHORTY is very easy to operate. Variable speed, 8 different rotation modes, different trajectories and oscillation provide a variety of training and application. Collecting net, remote control, large ball container and very easy installation and dismounting make the SHORTY an indispensable device for all training needs.

Dimensions: 81 x 41 x 40 cm    Weight: 4,5 kg

ART.-NO. 21125

RRP 599,00 €



**JOOLA**



ROBBER | 67

# IPONG V300

The JOOLA ROBOT iPONG V300 is set up and ready for use in seconds. The robot can eject between 20 and 70 balls per minute. Adjustment options for undercut and topspin are available. The oscillation speed and ball frequency are adjustable.

Dimensions: 48 x 28 x 28 cm    Weight: 1,1 kg

ART.-NO. 21129

RRP 219,00 €





## IPONG V200

The JOOLA ROBOT iPONG V200 is a high quality robot with innovative and modern design. He can throw backspin, topspin and counterballs. Its ball compartment holds 100 balls. Due to his height he is an ideal training partner. Suitable for hobby or club players.

Dimensions: 48 x 28 x 28 cm      Weight: 1,1 kg

ART.-NO. 21127

RRP 169,00 €



## IPONG V100

The JOOLA ROBOT iPONG V100 is the ideal training partner for beginners. With the remote control, the ball frequency can be adjusted. Topspin balls are ejected, the ball compartment holds 100 balls. Battery operated.

Dimensions: 48 x 28 x 28 cm      Weight: 1,1 kg

ART.-NO. 21130

RRP 119,00 €



## BALL CATCH NET IPONG

Economically priced, practical ball collection net for the iPONG. Easy and fast assembly, fits on the table with nets on the sides. The collected balls fall into a container or bucket (not included) through an opening, making it simple to refill the iPONG ball container.

ART.-NO. 21128

RRP 59,90 €



## A/C ADAPTER

Suitable for use with all iPing robot models.

ART.-NO. 21149

RRP 19,90 €



# INFINITY

---

**EXPERIENCE LIMITLESS TRAINING POSSIBILITIES  
WITH THE APP-CONTROLLED JOOLA INFINITY ROBOT.**



With the JOOLA Infinity Robot you have the perfect training partner and can start your training at any time with the specially developed app. Thanks to the individual setting options such as spin, frequency, speed, oscillation and the desired trajectory, you can define the intensity of your training yourself. Whether you're a beginner or a pro, with the JOOLA Infinity Robot you're ready for the next level.



### TRAJECTORY CONTROL

Serves, loops, push balls and lobs:  
-30 to 50 degrees, up and down



### OSCILLATION CONTROL

Shoots at any point on the table:  
150 degrees, from left to right



### SPEED CONTROL

4 km/h (1 m/s) to 72 km/h (20 m/s)



### FREQUENCY CONTROL

30 to 100 balls per minute



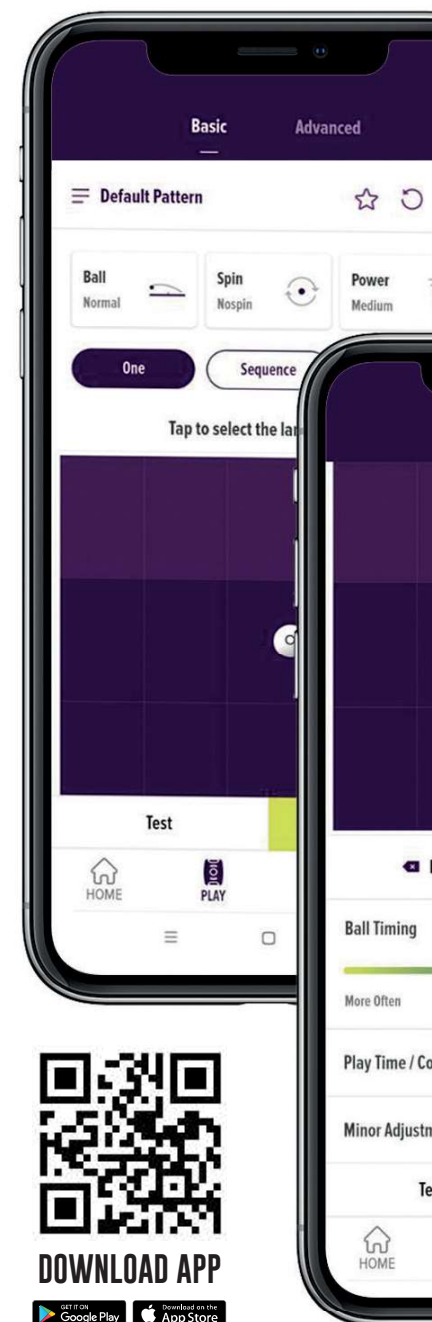
### SPIN CONTROL

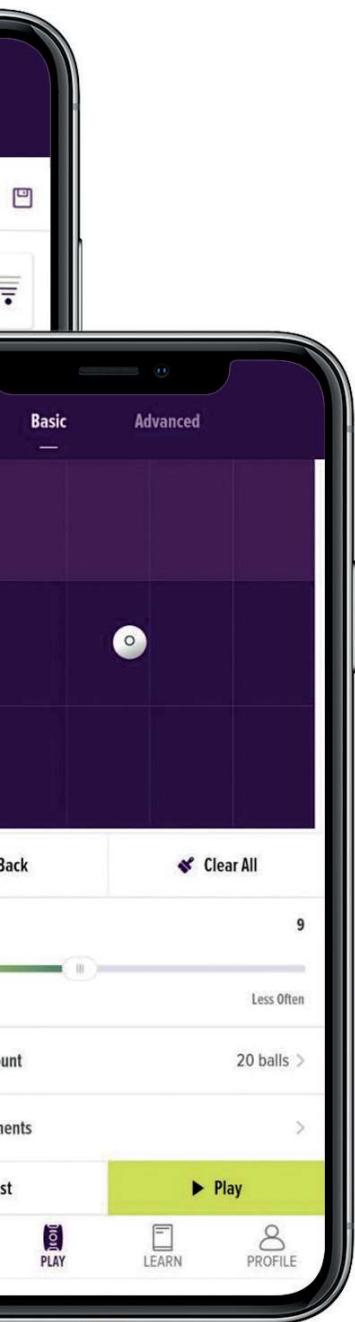
Top Spin, Underspin, Side Spin, No Spin.  
Side Spin: 45° to the left and 45° to the right.



### APP CONTROLLED

Control the JOOLA Infinity robot via the mobile app.  
Use pre-programmed exercises or create your own.





# ROBOT INFINITY

The JOOLA INFINITY Robot is the perfect table tennis training partner with fully adjustable parameters: spin, frequency, speed, oscillation and trajectory. Increase speed and frequency to test your limits with the never tiring training partner. Every ball in the game can be imitated, creating an enormously realistic feel. Via Bluetooth, you can replay pre-programmed exercises from friends or even experts using the app.

Dimensions: 81 x 31,75 x 37 cm    Weight: 9 kg

ART.-NO. 11190

RRP 1399,00 €



 JOOLA

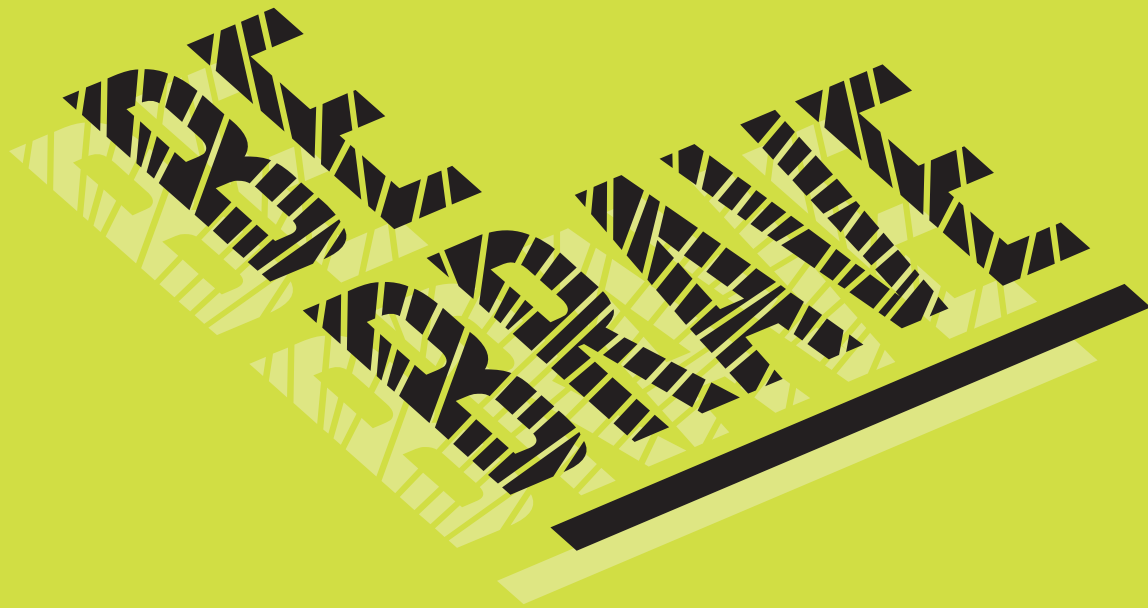




# DANIEL HABESOHN

---

EUROPEAN CHAMPION IN DOUBLE



ACCESSORIES



ACCESSORIES

# ACCESSORIES

---

ELEVATE YOUR GAME WITH ACCESSORIES THAT HELP YOU MAINTAIN  
PEAK PERFORMANCE CONDITIONS.

# MAGNETIC BALLHOLDER

The JOOLA magnetic table tennis ball holder set is the perfect solution for not having to constantly search for balls in the middle of the game. Made of durable rubber material, the ball holder holds to all metal surfaces of the table tennis table.

The set includes two holders and 10 high-quality 3-star table tennis balls with 40 mm diameter.

ART.-NO. 85010

RRP 16,90 €



JOOLA®

3000 SC





### RUBBER CLEANER SET

---

Consisting of JOOLA PRO CLEANER and a JOOLA Cleaningsponge.

Amount: 125 ml

---

ART.-NO. 84052

RRP 9,90 €



### RUBBER FOAM SET

---

Consisting of JOOLA CLIPPER FOAM and a JOOLA Cleaningsponge.

Amount: 100 ml

---

ART.-NO. 84051

RRP 8,90 €



## CLIPPER FOAM

Regular cleaning of rubbers is an effective protection to preserve the best playing characteristics for a long time.

Amount: 100 ml

ART.-NO. 84021

RRP 6,90 €



## TURBO CLEANER

Anti-static rubber cleaner. Regular use extends the durability and the firm grip of the rubber.

Amount: 250 ml

ART.-NO. 84015

RRP 6,50 €



## TABLE CLEANER

Cleaning fluid for table tennis tables. Regular use extend the durability of your table spray.

Amount: 500 ml

ART.-NO. 84010

RRP 9,90 €



## INSULATED CUP

The JOOLA INSULATED CUP made of stainless steel is double-walled insulated and keeps your drink at the desired temperature for hours. The reusable cup is designed so that it does not get hot on the outside. It holds 500 ml. The airtight lid is removable and has an easy sliding opening.

ART.-NO. 86010

RRP 13,90 €



## SHAKER BOTTLE

With a leak proof design, secure seal cap and detachable carry loop, the JOOLA SHAKER BOTTLE makes it easy to take your shake wherever you go. It has wide mouth that accommodates large scoops and makes it easy to clean. The stainless steel wire mixes your beverages in a breeze.

ART.-NO. 86000

RRP 8,90 €

## JOOLA TISCHTENNIS GMBH

Wiesenstraße 13  
DE – 76833 Siebeldingen  
[info@joola.de](mailto:info@joola.de)  
[www.joola.de](http://www.joola.de)

© 2022 JOOLA Tischtennis GmbH | All Rights Reserved

All prices include VAT and are exclusive of the current shipping costs. All prices shown are recommended retail prices.  
Subject to change without notice.





**BE JOOLA**

---

[WWW.JOOLA.DE](http://WWW.JOOLA.DE)